

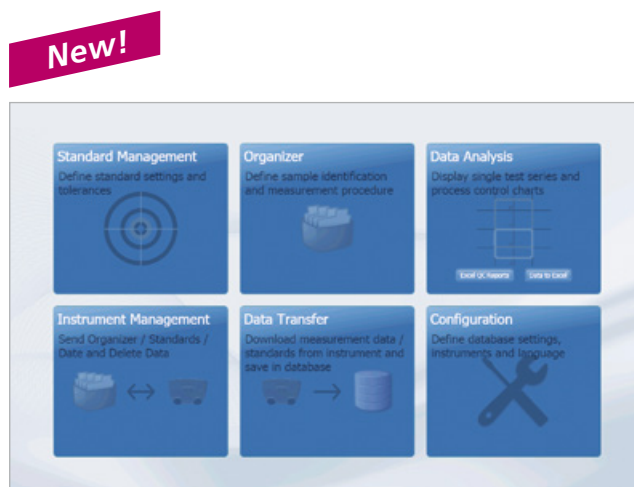
smart-process

Color and Appearance data in one QC management system

All critical color and appearance parameters can be saved and analyzed with one software package, smart-process.

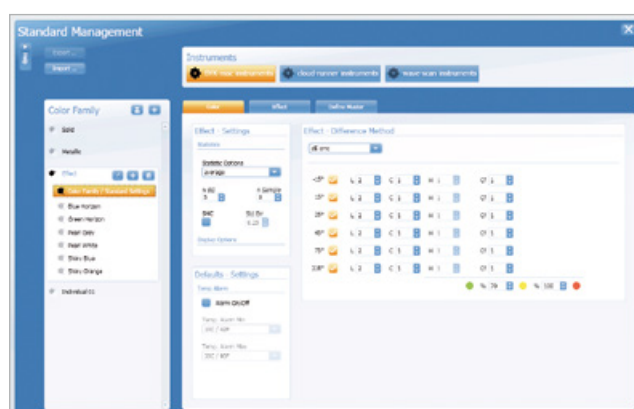
- Multi-angle color and effect control with BYK-mac i
- Orange peel and Distinctness-of-Image measurement with wave-scan
- Objective mottling analysis with the new cloud-runner

It is smart in more than one way. 6 different apps let you set up a state-of-the art color & appearance management system.



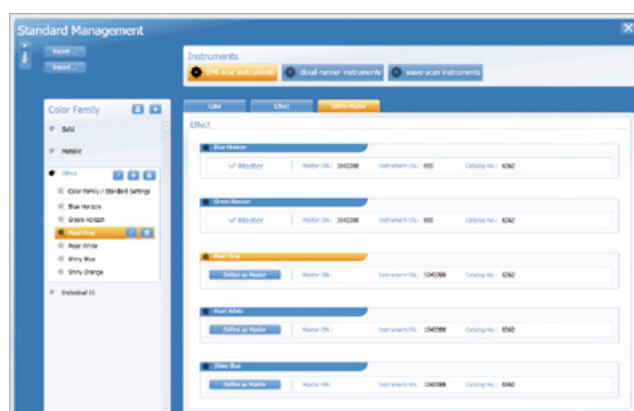
Standard Management – manage an unlimited number of colors

smart-process includes powerful standard management for defining all essential color and appearance control parameters with Pass / Fail tolerances. Customer specific color and appearance scales for major automotive makers are already predefined and ensure color and appearance control according to their internal specifications.



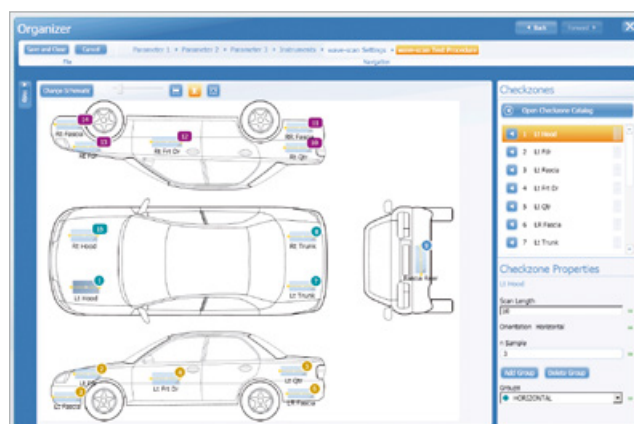
Digital Standard – guarantees a seamless workflow

Thanks to the outstanding inter-instrument agreement of BYK-mac i – proven by all automotive makers and unsurpassed in the industry – smart-process enables you to use “digital standards” on a global basis with your entire supply chain. Export and import your color standards in xml file format and send them by email to your supply chain. Thus, color control data are reliable and communication among all parties is seamless and efficient.



Organizer Set-up – standardized measurement and sample labeling

smart-process offers set-up of Organizers for clear sample identification and a menu guided operation on the instrument. Product schematics help to define specific sampling procedures. The entered parameters can be used for filtering the measured data saved in the database. Typical identifiers are model, color or product ID – smart-process is open for your specific needs.



BYK-mac i Color Harmony and Process Control Chart

Lab-Scatter Graph

This standard report shows at a glance whether all parts are within specification. One graph per angle is shown and different tolerance models (e.g. CMC, DIN 6175-2) can be selected.

Effect Graph

Similar to the Lab-scatter graph, this chart easily shows whether effect differences are within tolerance. One graph per sparkle angle and graininess is displayed. Tolerances can be set to your specific requirements.

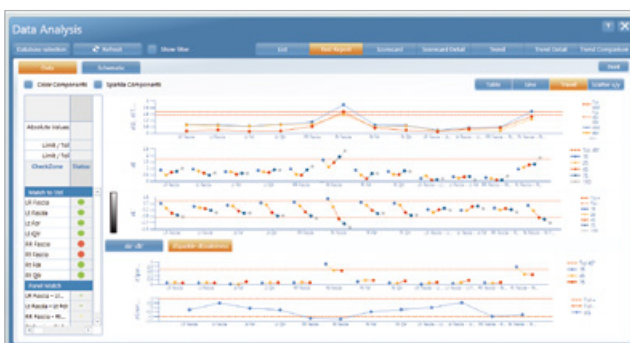
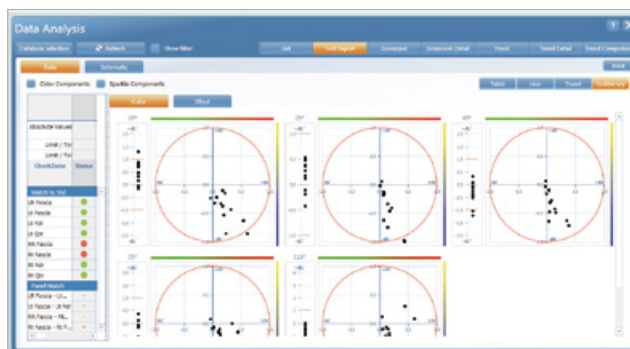
Color & Effect Travel by Sample

...the ideal tool to show how individual measurement areas or colors perform per measurement angle. In combination with a graph for sparkle and graininess values, total color impression can be easily controlled.

cloud-runner Mottle Chart

Customer relevant limits for mottling can be defined by setting limits for the Mottling indices. The measured data is displayed in a two-dimensional chart with red – yellow – green ranges for easy process control. In addition, the mottle spectrum gives more detailed information for optimization and trouble shooting.

With smart-process, you'll know where you are, where you're going, and how to get there.



Ordering Information

Cat. No.	Description
4831	smart-process

Comes complete with:

Software on CD-ROM, with License Key
Note: smart-process licence fee for more than two installations is quantity dependent. Please contact your local BYK-Gardner representative.

System Requirements:

Operating system: Windows 7 SP1 or 8.1
Microsoft® .NET Framework 4
Hardware: Core 2 Duo, 2.2 GHz; i7, 2.5 GHz recommended, or equivalent
Memory: 4 GB RAM, 8 GB recommended
Hard-disk capacity: min. 300 MB
Monitor resolution: 1280 x 1024 pixel or higher
Disk drive: CD-ROM or DVD drive
Interface: free USB-port

Technical Specifications

Process QC Software for BYK-mac i, wave-scan and cloud-runner

Instruments	wave-scan dual, wave-scan II, micro-wave-scan, BYK-mac i, BYK-mac i COLOR, cloud-runner
Export/Import	Color Standards (.xml format) Organizer (.xml format)
Database format	SQL Server Compact
Languages	Chinese, English, French, German, Italian, Japanese, Spanish