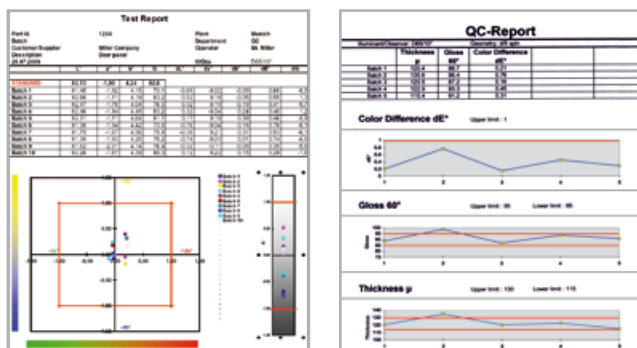


## Professional Documentation with easy-link

No matter whether you want to compare a batch to a defined standard or monitor process changes over time, easy-link, included with spectro-guide, offers all of the necessary tools. Direct data transfer from the spectrophotometer into predefined QC templates makes you ready for routine color control.

### Are all parts within specification?

The CIE Lab-Graph charts differences in color and lightness together with production tolerances.

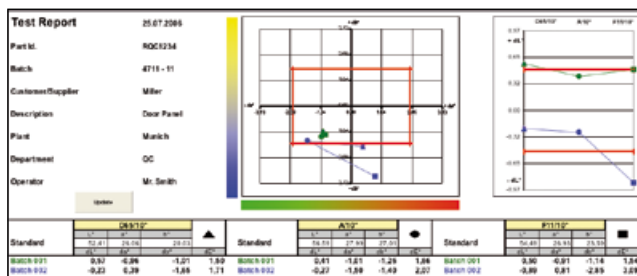


### Is production stable over time?

All data are summarized in a trend graph: Color, gloss, film thickness and your own product specific information.

### Do parts made out of different materials match?

Color differences are displayed simultaneously for three illuminants to control metamerism.



## Ordering Information

Cat. No.	Description
4545	BYKWARE easy-link

### Hardware Requirements:

Operating system: Windows® 2000 or higher  
Excel® version: 2000 or higher including VBA  
Interface: serial or USB port



## Easy Standard Management

### Manual entry of standard

If you have to match colors and the physical sample is no longer available, you can easily enter the spectral data in easy-link. The standards can then be transferred to the spectro-guide spectrophotometer for color QC.

### Back-up your standard data

For safety reasons, it is recommended to store your complete database of standards on the PC. They can be downloaded to spectro-guide – whenever needed.

### Establish your tolerances

The auto tolerancing function assists you in setting up the tolerances for Pass/Fail control. Measure at least 20 visually accepted production trials, transfer the readings to easy-link and have the tolerances automatically calculated for you – saving time and headaches.