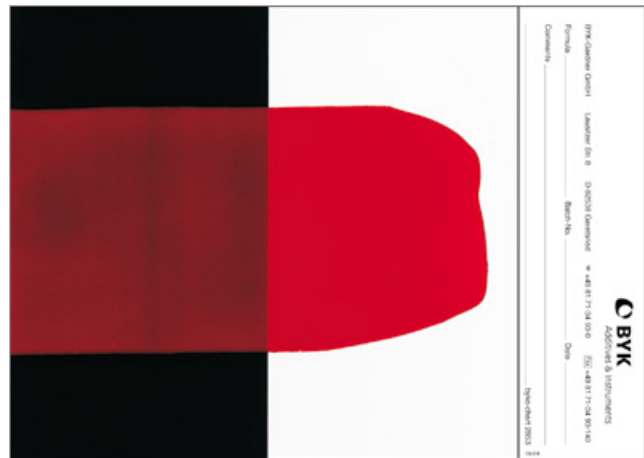


Opacity Drawdown Charts

Comprised of a simple combination of black and white areas with ample space for reflectance measurement. Opacity drawdown charts are used to test the hiding power of coatings.

Black and white areas have the tightest tolerances in the industry, ensuring repeatable opacity measurements paint batch after paint batch.

Clearcoated charts have the lot number printed on every chart.



Cat. No.
2810
2813
2860

Cat. No.
2811

Cat. No.
2812

Cat. No.
2851

Cat. No.
2852

Standards

ASTM D 344, D 2805

ISO 6504-3

Ordering Information

Cat. No.	Description
2810	byko-chart Opacity 2A
2813	byko-chart Opacity 2C
2811	byko-chart Opacity 3B
2812	byko-chart Opacity 5C
2851	byko-chart Opacity L
2852	byko-chart Opacity S
2860	byko-chart brightened 2A

Technical Specifications

Material	Size	Qty/Box
Clearcoated	140 x 254 mm (5.5 x 10 in)	250
Clearcoated	194 x 260 mm (7.6 x 10.25 in)	250
Clearcoated	194 x 289 mm (7.6 x 11.4 in)	250
Clearcoated	194 x 260 mm (7.6 x 10.25 in)	250
Film laminated	148 x 210 mm (5.8 x 8.3 in)	250
Film laminated	105 x 140 mm (4.1 x 5.5 in)	250
Clearcoated	140 x 254 mm (5.5 x 10 in)	250

The 2860 byko-chart brightened drawdown chart has a brighter white section compared to the other opacity charts. The CIE L* value is approximately 2 units higher and the CIE b* value is approximately 2 units lower compared to the standard byko-charts. The black section is comparable to standard byko-charts. The paper does not have a brightening agent to achieve the whiter appearance.



Save!

SAVE up to 30% when you buy 4 or more boxes!